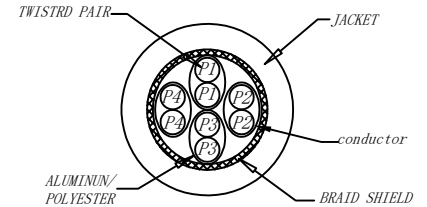
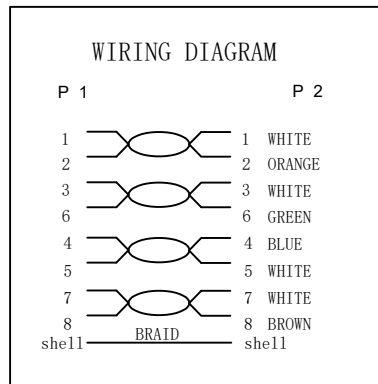
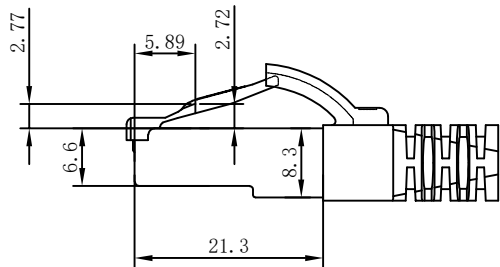
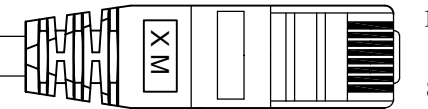


①



MATERIAL LIST:

| ③ | OVER MOLD | PVC 75A | 8PCS | |
|-----|------------|---|-------|--------|
| ② | PLUG | RJ45 8P8C Shielded Plug, Pin Gold Plated 3u", Shell Nickel Plating , Transparent Blue | 2PCS | |
| ① | CABLE | S/FTP CAT. 6A 27AWG (BC+AL-FOIL)*4PAIR+Braid(AL-MG) +JACKET:LSZH OD:5.8±0.2MM | 1PCS | |
| NO. | PARTS NAME | SPECIFICATION STANDARD | QT' Y | REMARK |

NOTE:

- ELECTRICAL TEST:
 - 100% OPEN SHORT, MISS WIRE TEST
 - INSULATION RESISTANCE:DC 300V 10M Ohm;
 - CONTACTOR RESISTANCE:1 OHM per meter
- FLUKE TEST LIMIT:ISO11801 Channel Class Ea
- Operating temperature:-20°C ~ + 75°C
- ROHS 3.0 & REACH COMPLIANT
- Support PoE/PoE+/PoE++
- Packing:Synergy21 PE Bag+Label
- Minimum of the bending radius is 60mm
- Flame retardant (IEC60332-1-2)
Low smoke(IEC 61034)
Halogen free(IEC 60754-2)

| | | | | |
|-------|-----|---|------------|------|
| Hasia | | change "ROSH 2.0" to "ROSH 3.0" | 2022-02-25 | A7 |
| | | Add IEC60332-1-2 | 2021-01-23 | A6 |
| | | Change Spary Word | 2020-01-08 | A5 |
| | | Increase the minimum bend radius | 2018-11-30 | A4 |
| | | Delete label on the cable & Change Spary Word | 2018-09-05 | A3 |
| | | CHANGE PACKING AND MARKING | 2018-03-09 | A2 |
| BY | CHK | REVISION RECORD MODIFICATIONS | DATE | REV. |

| | | | | |
|-------------------|-------------------------------------|----------------------|---------------|---------|
| SYNERGY 21 | | | | |
| CUSTOMER | | ITEM NO. | See The Chart | |
| PRODUCT NAME | CAT. 6A S/FTP 27AWG LSZH PATCH CORD | manufacture country: | CHINA | UNIT MM |
| DRAWNBY | CHECKBY | APPROVE | DATE | |
| SYNERGY 21 | SYNERGY 21 | SYNERGY 21 | 2015-01-20 | |

Chart:

| COLOR:GREY PANTONE 421C | | | COLOR:YELLOW PANTONE 135C | | | COLOR:GREEN PANTONE 3278C | | | COLOR:blue PANTONE 647C | | |
|-------------------------|-----------|------------------|---------------------------|-----------|------------------|---------------------------|-----------|------------------|-------------------------|-----------|------------------|
| ITEM | LENGTH/mm | PACKING | ITEM | LENGTH/mm | PACKING | ITEM | LENGTH/mm | PACKING | ITEM | LENGTH/mm | PACKING |
| S216600 | 250±10 | SYNERGY 21 A Bag | S216620 | 250±10 | SYNERGY 21 A Bag | S216630 | 250±10 | SYNERGY 21 A Bag | S216610 | 250±10 | SYNERGY 21 A Bag |
| S216601 | 500±15 | SYNERGY 21 A Bag | S216621 | 500±15 | SYNERGY 21 A Bag | S216631 | 500±15 | SYNERGY 21 A Bag | S216611 | 500±15 | SYNERGY 21 A Bag |
| S216602 | 1000±20 | SYNERGY 21 B Bag | S216622 | 1000±20 | SYNERGY 21 B Bag | S216632 | 1000±20 | SYNERGY 21 B Bag | S216612 | 1000±20 | SYNERGY 21 B Bag |
| S216603 | 1500±30 | SYNERGY 21 B Bag | S216623 | 1500±30 | SYNERGY 21 B Bag | S216633 | 1500±30 | SYNERGY 21 B Bag | S216613 | 1500±30 | SYNERGY 21 B Bag |
| S216604 | 2000±30 | SYNERGY 21 B Bag | S216624 | 2000±30 | SYNERGY 21 B Bag | S216634 | 2000±30 | SYNERGY 21 B Bag | S216614 | 2000±30 | SYNERGY 21 B Bag |
| S216605 | 3000±50 | SYNERGY 21 B Bag | S216625 | 3000±50 | SYNERGY 21 B Bag | S216635 | 3000±50 | SYNERGY 21 B Bag | S216615 | 3000±50 | SYNERGY 21 B Bag |
| S216606 | 5000±100 | SYNERGY 21 B Bag | S216626 | 5000±100 | SYNERGY 21 B Bag | S216636 | 5000±100 | SYNERGY 21 B Bag | S216616 | 5000±100 | SYNERGY 21 B Bag |
| S216607 | 7500±200 | SYNERGY 21 B Bag | S216627 | 7500±200 | SYNERGY 21 B Bag | S216637 | 7500±200 | SYNERGY 21 B Bag | S216617 | 7500±200 | SYNERGY 21 B Bag |
| S216608 | 10000±200 | SYNERGY 21 C Bag | S216628 | 10000±200 | SYNERGY 21 C Bag | S216638 | 10000±200 | SYNERGY 21 C Bag | S216618 | 10000±200 | SYNERGY 21 C Bag |
| S216609 | 15000±300 | SYNERGY 21 C Bag | S216629 | 15000±300 | SYNERGY 21 C Bag | S216639 | 15000±300 | SYNERGY 21 C Bag | S216619 | 15000±300 | SYNERGY 21 C Bag |
| | 20000±300 | SYNERGY 21 C Bag | | 20000±300 | SYNERGY 21 C Bag | | 20000±300 | SYNERGY 21 C Bag | | 20000±300 | SYNERGY 21 C Bag |

| | | | | | |
|-------------------|--------------------------|-------------------------------|---------|----------|---|
| SYNERGY 21 | | | | | |
| CUSTOMER | | | | ITEM NO. | See The Chart |
| PRODUCT NAME | CAT. 6A S/FTP PATCH CORD | manufacture country: | CHINA | UNTT | MM |
| | | | APPROVE | | DATE |
| BY | CHK | REVISION RECORD MODIFICATIONS | DATE | REV. | SYNERGY 21 SYNERGY 21 SYNERGY 21 2015-01-20 |

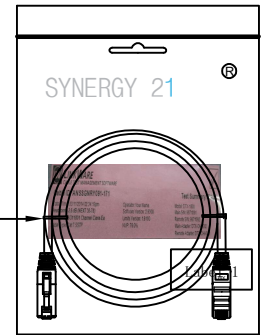
| | | | | | | | | |
|--|--|-----|------------|---|---------|---------|---------|------|
| | | NEW | 2015-01-20 | A | DRAWNBY | CHECKBY | APPROVE | DATE |
|--|--|-----|------------|---|---------|---------|---------|------|

| COLOR:RED PANTONE 199C | | |
|------------------------|-----------|------------------|
| ITEM | LENGTH/mm | PACKING |
| S216650 | 250±10 | SYNERGY 21 A Bag |
| S216651 | 500±15 | SYNERGY 21 A Bag |
| S216652 | 1000±20 | SYNERGY 21 B Bag |
| S216653 | 1500±30 | SYNERGY 21 B Bag |
| S216654 | 2000±30 | SYNERGY 21 B Bag |
| S216655 | 3000±50 | SYNERGY 21 B Bag |
| S216656 | 5000±100 | SYNERGY 21 B Bag |
| S216657 | 7500±200 | SYNERGY 21 B Bag |
| S216658 | 10000±200 | SYNERGY 21 C Bag |
| S216659 | 15000±300 | SYNERGY 21 C Bag |
| | 20000±300 | SYNERGY 21 C Bag |

| COLOR:WHITE | | |
|-------------|-----------|------------------|
| ITEM | LENGTH/mm | PACKING |
| S216670 | 250±10 | SYNERGY 21 A Bag |
| S216671 | 500±15 | SYNERGY 21 A Bag |
| S216672 | 1000±20 | SYNERGY 21 B Bag |
| S216673 | 1500±30 | SYNERGY 21 B Bag |
| S216674 | 2000±30 | SYNERGY 21 B Bag |
| S216675 | 3000±50 | SYNERGY 21 B Bag |
| S216676 | 5000±100 | SYNERGY 21 B Bag |
| S216677 | 7500±200 | SYNERGY 21 B Bag |
| S216678 | 10000±200 | SYNERGY 21 C Bag |
| S216679 | 15000±300 | SYNERGY 21 C Bag |
| | 20000±300 | SYNERGY 21 C Bag |

| COLOR:BLACK PANTONE BLACK 3C | | |
|------------------------------|-----------|------------------|
| ITEM | LENGTH/mm | PACKING |
| S216660 | 250±10 | SYNERGY 21 A Bag |
| S216661 | 500±15 | SYNERGY 21 A Bag |
| S216662 | 1000±20 | SYNERGY 21 B Bag |
| S216663 | 1500±30 | SYNERGY 21 B Bag |
| S216664 | 2000±30 | SYNERGY 21 B Bag |
| S216665 | 3000±50 | SYNERGY 21 B Bag |
| S216666 | 5000±100 | SYNERGY 21 B Bag |
| S216667 | 7500±200 | SYNERGY 21 B Bag |
| S216668 | 10000±200 | SYNERGY 21 C Bag |
| S216669 | 15000±300 | SYNERGY 21 C Bag |
| | 20000±300 | SYNERGY 21 C Bag |

| COLOR:Orange PANTONE 1575C | | |
|----------------------------|-----------|------------------|
| ITEM | LENGTH/mm | PACKING |
| S216640 | 250±10 | SYNERGY 21 A Bag |
| S216641 | 500±15 | SYNERGY 21 A Bag |
| S216642 | 1000±20 | SYNERGY 21 B Bag |
| S216643 | 1500±30 | SYNERGY 21 B Bag |
| S216644 | 2000±30 | SYNERGY 21 B Bag |
| S216645 | 3000±50 | SYNERGY 21 B Bag |
| S216646 | 5000±100 | SYNERGY 21 B Bag |
| S216647 | 7500±200 | SYNERGY 21 B Bag |
| S216648 | 10000±200 | SYNERGY 21 C Bag |
| S216649 | 15000±300 | SYNERGY 21 C Bag |
| | 20000±300 | SYNERGY 21 C Bag |



Test report

| SYNERGY 21 | | | | | | | |
|--------------|-------------------------|-------------------------------|------------|-------|----------|------------|---------------|
| CUSTOMER | | | | | ITEM NO. | | See The Chart |
| PRODUCT NAME | CAT.6A S/FTP PATCH CORD | manufacture country: | | CHINA | UNTT | MM | |
| | | NEW | 2015-01-20 | A | DRAWNBY | CHECKBY | APPROVE |
| BY | CHK | REVISION RECORD MODIFICATIONS | | DATE | REV. | SYNERGY 21 | SYNERGY 21 |
| | | | | | | SYNERGY 21 | SYNERGY 21 |
| | | | | | | SYNERGY 21 | 2015-01-20 |