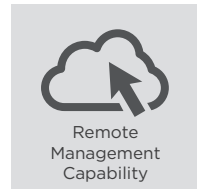
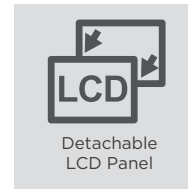
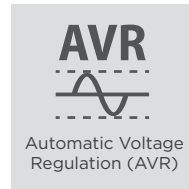
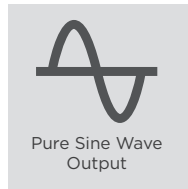
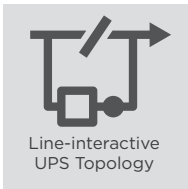




## PROFESSIONAL UPS TO SAFEGUARD IT EQUIPMENT



### The professional UPS with Automatic Voltage Regulation to stabilize the AC power output for business applications

Designed for computer room and server room applications, the Professional Tower Series adopts line-interactive topology with Automatic Voltage Regulation (AVR) function to offer stabilized AC power output with Pure Sine Wave to ensure high power quality. The UPSs feature hot-swappable battery packs for maintenance without power interruption. The products are also compatible with power management software to easily control and monitor the UPS system.

#### APPLICATION

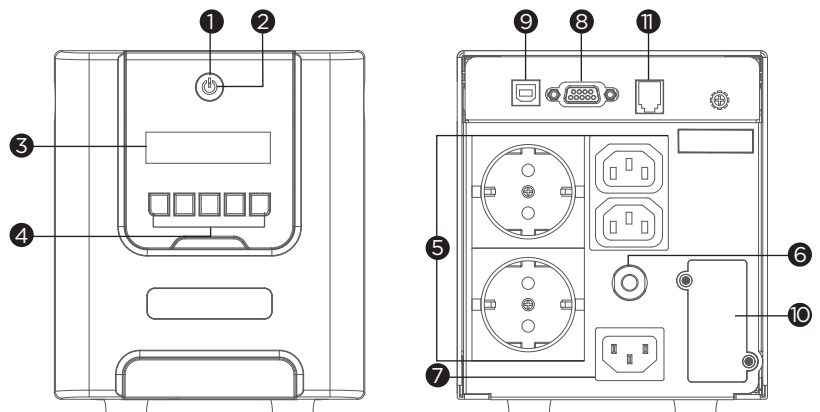
- SOHO Office
- Back Office
- Data Center
- Factory
- Train Station
- Office
- Server Room
- Supermarket
- Airport

#### SERIES FEATURES

- Line-interactive UPS Topology
- Active PFC Compatible
- Automatic Voltage Regulation (AVR)
- Hot-swappable Batteries
- Emergency Power Off (EPO) Port
- SNMP/HTTP Remote Management Capability (Optional)
- Energy Saving Technology
- Pure Sine Wave Output
- Overload Protection
- Detachable LCD Panel
- PowerPanel® Management Software

#### PRODUCT CALLOUTS

- 1 . Power On Indicator
- 2 . Power On/Off Switch
- 3 . LCD Display Panel
- 4 . Function Button(s)
- 5 . Battery Backup & Surge Protected Outlets
- 6 . Input Circuit Breaker
- 7 . AC Inlet
- 8 . Serial Port
- 9 . USB Port
- 10 . SNMP/HTTP Network Slot
- 11 . EPO Port



PR750ELCDGR



## TECHNICAL SPECIFICATIONS

Model Name	PR750ELCDGR
<b>General</b>	
UPS Topology	Line-interactive
Energy Saving Technology	GreenPower UPS™ Bypass Technology
Active PFC Compatibility	Yes
<b>Input</b>	
Nominal Input Voltage (Vac)	230
Input Voltage Range (Vac)	150 - 301
Input Frequency (Hz)	50 ± 3, 60 ± 3
Input Frequency Detection	Auto-sensing
Input Connector Type	IEC C14
<b>Output</b>	
Capacity (VA)	750
Capacity (Watts)	675
On Battery Waveform	Pure Sine Wave
On Battery Voltage(s) (Vac)	230 ± 5%
On Battery Frequency (Hz)	50 ± 1%, 60 ± 1%
Power Factor	0.9
Automatic Voltage Regulation (AVR)	Double Boost, Single Buck
Overload Protection	Internal Current Limiting
Outlet(s) - Total	4
Outlet Type	IEC C13 x 2, Schuko x 2
Outlet(s) - Battery & Surge Protected	4
Typical Transfer Time (ms)	4
<b>Battery</b>	
Runtime at Half Load (min)	12
Runtime at Full Load (min)	4
Typical Recharge Time (Hours)	8
User-replaceable	Yes
Hot-swappable	Yes
Battery Type	Sealed Lead-acid
Replacement Battery Pack	RBPO014
RBP Quantity (pcs)	1
<b>Surge Protection &amp; Filtering</b>	
Surge Suppression (Joules)	405
EMI/RFI Filtration	Yes
<b>Management &amp; Communications</b>	
LCD Panel	Yes
Detachable LCD Panel	Yes
HID Compliant USB Port(s)	1
Serial Port	Combo (RS232 + Dry Contact)
Emergency Power Off (EPO) Port	Yes
Power Management Software	PowerPanel® Business (Recommended)
SNMP/HTTP Remote Monitoring	Yes - with optional RMCARD205
<b>Physical</b>	
Form Factor	Tower
<b>Physical Size - UPS Module</b>	
Dimensions (WxHxD) (mm.)	136 x 162 x 349
Weight (kg.)	12.3
<b>Environmental</b>	
Operating Temperature (°C)	0 - 40
Operating Relative Humidity (Non-condensing) (%)	0 - 95
Online Thermal Dissipation (BTU/hr)	75
<b>Certifications</b>	
Certifications*	CE
RoHS	Yes

\*Certifications may vary according to different regions. Visit [www.cyberpower.com](http://www.cyberpower.com) for more information.  
#All specifications are subject to change without notice.