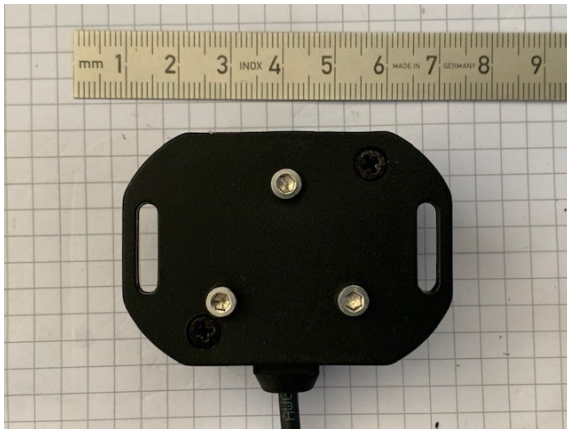


ALLNET MSR Sensor ALL4456 / Leakage sensor / Water detected on the floor

>>> [Go to the shop article](#)

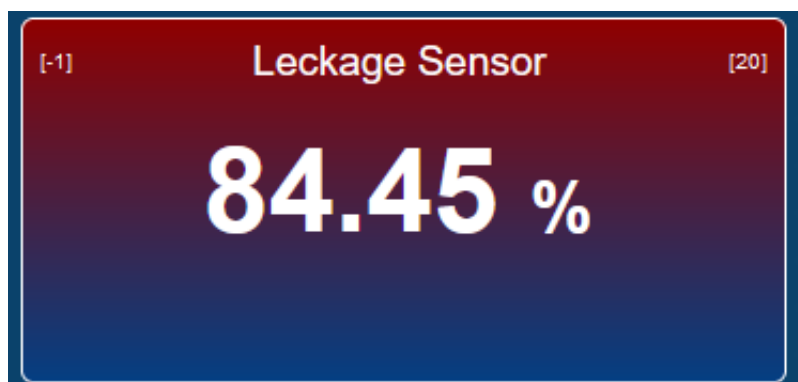


EAN CODE

Leakage Sensor for 3418v2/34xx/35xx/4500/5000

- Detects if leading conductive liquid is present on the floor
- In the display / central unit, the display is shown in % percentage = Example: Ca. 95~100% floaters are in the water. 50% display = There is still some conductive liquid present on the floor. From 40% the threshold is pre-configured from green to red.
- Connections: 2x RJ45 I2C at the sensor housing
- Including 2m cable length to the floaters that register the conductivity of the liquid on the floor

Example view in WebGUI:



Sensor information:

Leckage Sensor

Sensor
Darstellung
Berechnung
Information

Chip Beschreibung:	Leckagesensor
Chip Funktion:	0 - 255 stufen
Geräte Artikelnr.:	ALL4456
Maßeinheit:	%
Sensor Messbereich:	[0] - [100]
Chip Id:	22154
Chip Nummer:	22154/0/0
Chip Adresse Min:	0
Chip Adresse Max:	15
Geräte Anschluss:	0
Gruppe:	0
System / Bus:	30
Multiplexer Anschluss:	1

Interne ID:	143
Adresse:	0/0/0
Bus Geschwindigkeit:	50
Priorität:	1

Abbrechen
Eingaben speichern

Attributes

Attribute	Value
Bauform:	Metallgehäuse
Einsatzorte:	indoor
Kompatibilität Zentrale:	ALL3419;ALL3500;ALL3500PoE;PoE Signallampe;ALL3696;ALL3420;ALL5000;ALL4500;ALL5000v2;ALL3418;ALL5100;ALL3692;



Part No.: 211006
Vendor Part No.: ALL4456

Attribute	Value
Weight:	1 Kg
Warranty:	24.00 Months