

## quickMOUNT pro

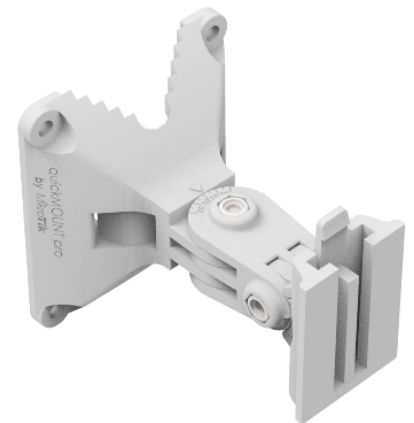
The quickMOUNT pro is an advanced wall mount adapter for small point to point and sector antennas. You can mount it on the wall or use it as an adapter from large diameter pole to small size antenna mounting clip ensuring reliable fitment.

The quickMOUNT pro gives possibility to turn antenna within 140° both in horizontal and vertical plane. With the quickMOUNT pro it is possible to perfectly set antenna alignment using integrated graduated scale.

You can use the quickMOUNT pro with any pole mountable device or Mikrotiks small mounting clip with weight less than 1.5 kg.

- It's simple and low cost.
- Supports SXT, Omnitik, BaseBox or any other pole mountable device.

The adapter is very durable due to its special plastic material composite - anvilNITE (TM).



## Specifications

|  |  |
|--|--|
| Product code                                     | QMP  |
| Dimensions                                       | 95x88x112mm  |
| Tube diameter                                    | 35 mm  |
| Max tube diameter to which mount can be attached | 65 mm  |
| Maximum antenna weight                           | 1.5 kg   |
| Maximum wind load                                | 100 N  |
| Turn angle for Mikrotik products                 | 140°   |
| Compatible devices                               | SXT series, Omnitik, 3rd party antennas that are designed to be pole mounted |
| Material   | anvilNITE™   |